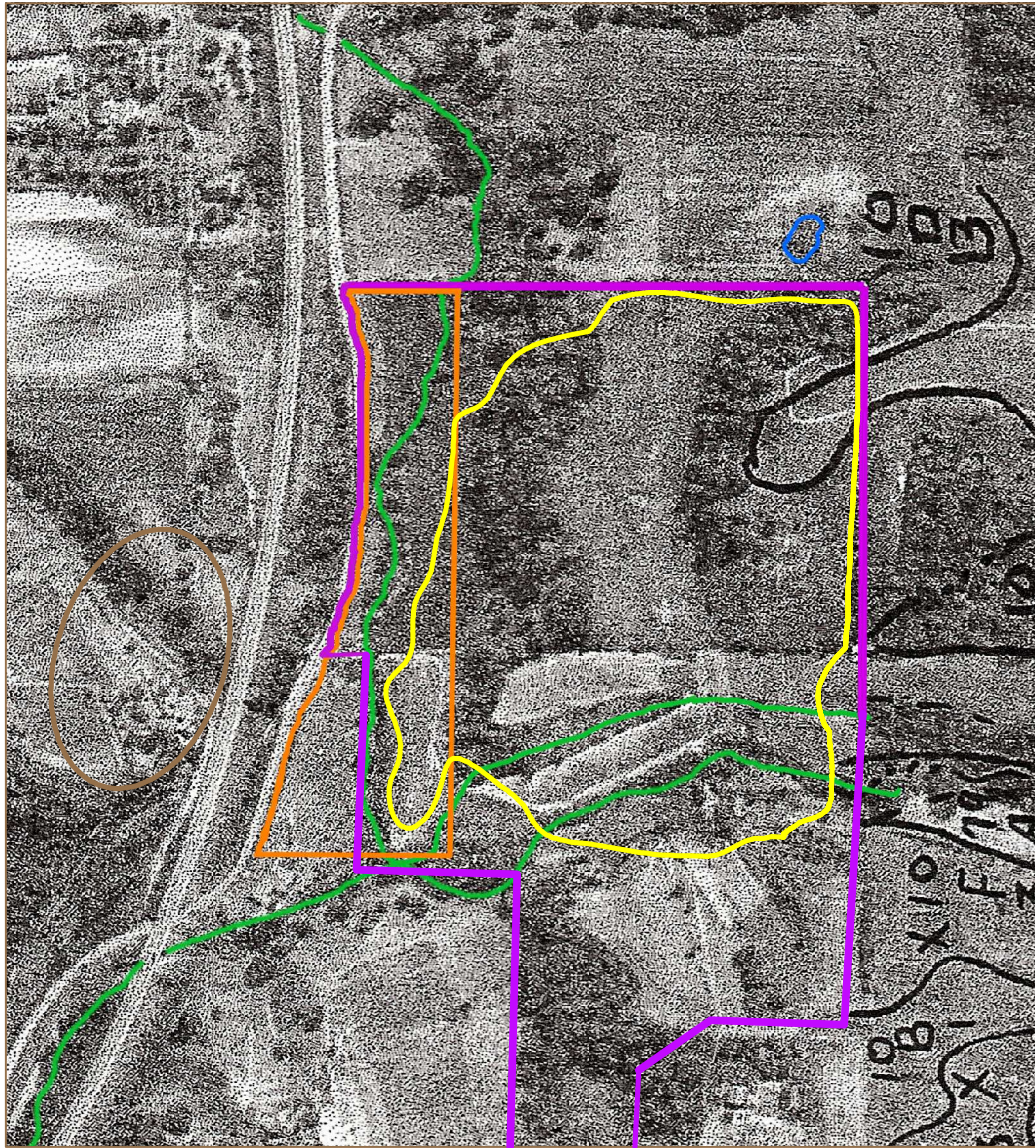


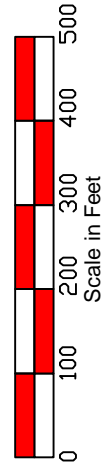
Attachment 7
Revised Figures B1-B12, Exhibit 1-2
Excerpt from the
Petition for Adjusted Standards, Closed Collinsville Landfill
December 4, 2014.

DRAWING: \\divs178fs1.tt.local\Projects\Subway\Collinsville\Petition for adjusted standards\2015\New or revised exhibits\FIGURE B1 .DWG



Legend

- Boundary of Waste
- City of Collinsville Property Boundary
- Extent Area 1 Coal/Gob Storage
- Extent Area 3 Pond
- Creeks/Tributary
- Portion of Area 2. Largest portion of Area 2 is west of the site and off the map.



TETRA TECH

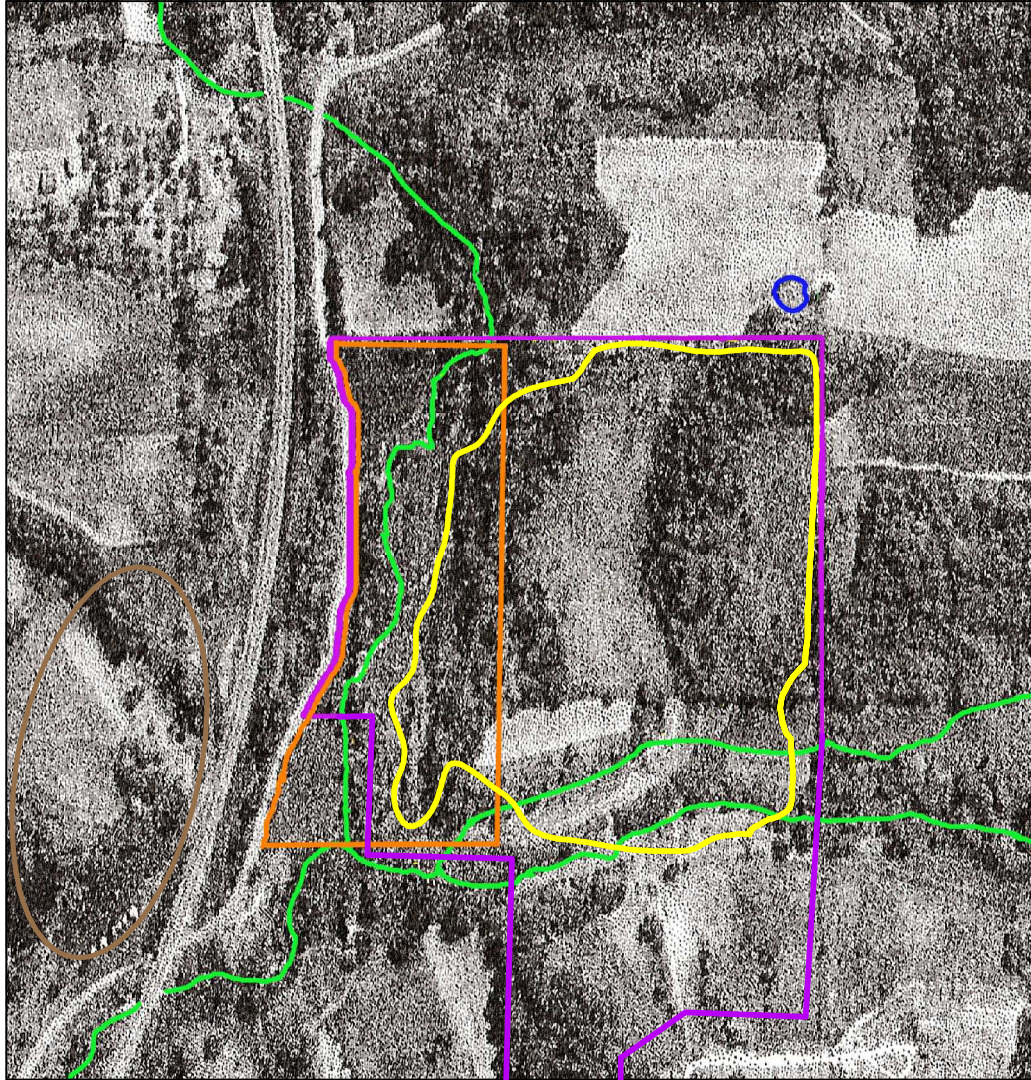
www.tetrattech.com

1634 Eastport Plaza Drive
Collinsville, IL 62234
PHONE: 618-343-2300 FAX: 618-345-1281







Drawing Description	33826
1941 Aerial Photograph	Date: July 2015
Collinsville Landfill Madison County, Illinois	Drawn By: DWC/RMN
Figure Number	
B-1	

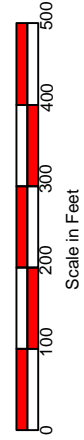


DRAWING: \\divs178f1.tt.local\Projects\Subway\Collinsville\Petition for adjusted standards\2015\New or revised exhibits\FIGURE B2 .DWG



Legend

-  Boundary of Waste
-  City of Collinsville Property Boundary
-  Extent Area 1 Coal/Gob Storage
-  Extent Area 3 Pond
-  Creeks/Tributary
-  Portion of Area 2. Largest portion of Area 2 is west of the site and off the map




TETRA TECH

www.tetrattech.com

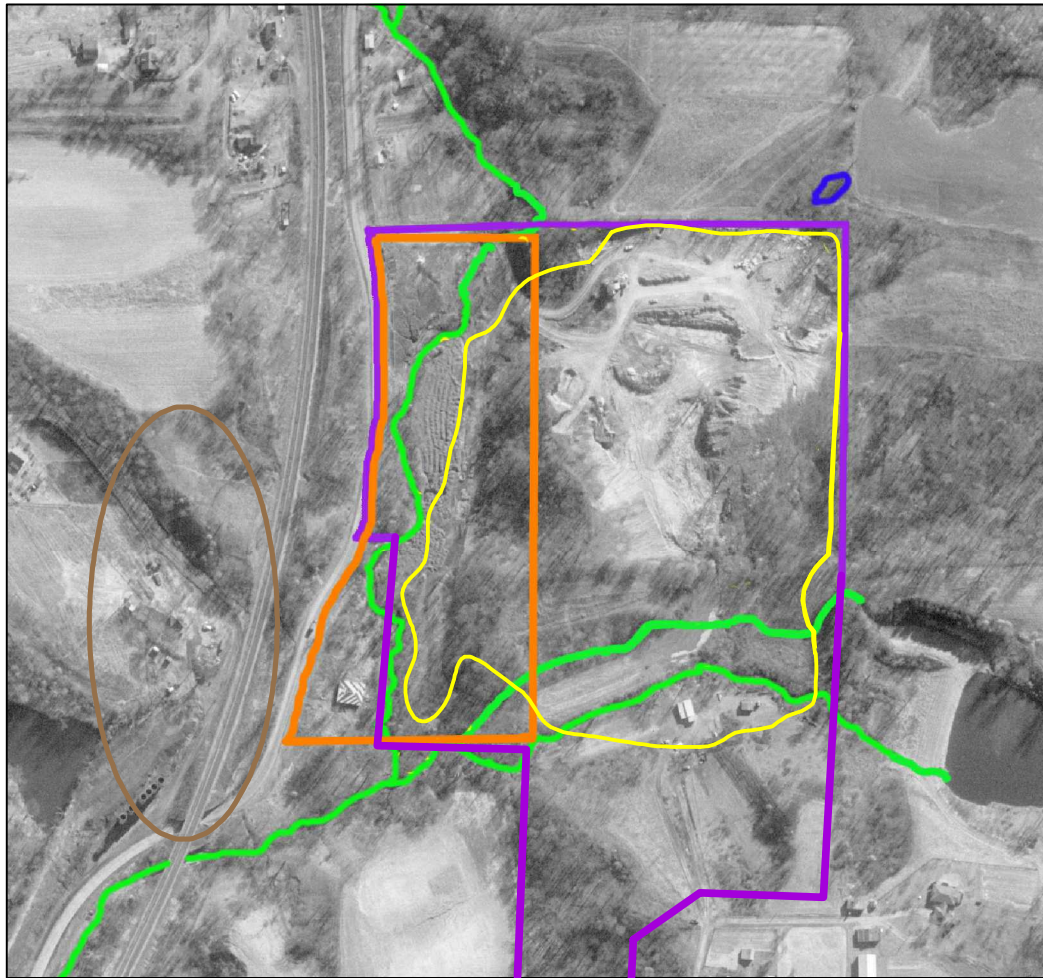
1634 Eastport Plaza Drive
Collinsville, IL 62234
PHONE: 618-343-2300 FAX: 618-345-1281

Drawing Description	1956 Aerial Photograph
	Collinsville Landfill Madison County, Illinois

Project No.:	33826
Date:	July 2015
Drawn By:	DWC/RMN
Figure Number	B-2

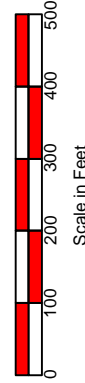


DRAWING: \\divs178f1.tt.local\Projects\Subway\Collinsville\Petition for adjusted standards\2015\New or revised exhibits\FIGURE B3 .DWG



Legend

- Boundary of Waste
- City of Collinsville Property Boundary
- Extent Area 1 Coal/Gob Storage
- Extent Area 3 Pond
- Creeks/Tributary
- Portion of Area 2. Largest portion of Area 2 is west of the site and off the map



TETRA TECH

www.tetrattech.com







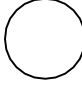
1634 Eastport Plaza Drive
Collinsville, IL 62234
PHONE: 618-343-2300 FAX: 618-345-1281

Drawing Description	33826
1968 Aerial Photograph	Date: July 2015
Collinsville Landfill Madison County, Illinois	Drawn By: DWG/RMN
Figure Number B-3	

DRAWING: P:\Subway\Collinsville\Petition for adjusted standards\2015\New or revised exhibits\FIGURE B4 .DWG



Legend

-  Boundary of Waste
-  City of Collinsville Property Boundary
-  Extent Area 1 Coal/Gob Storage
-  Extent Area 3 Pond
-  Creeks/Tributary
-  Area 2 Surface Disturbances associated with mine
-  Mine Shaft Locations

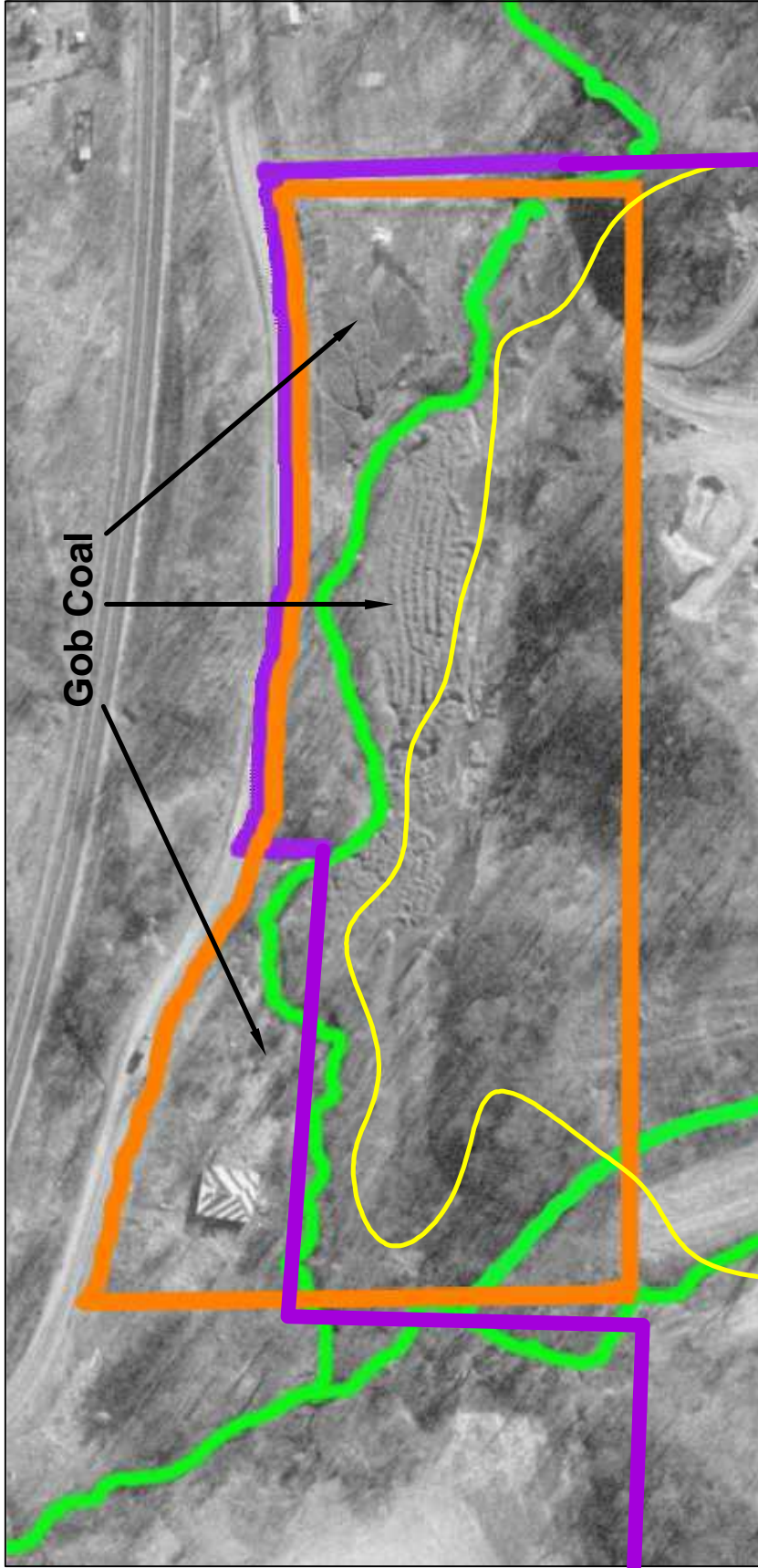


TETRA TECH
www.tetratech.com
 1634 Eastport Plaza Drive
 Collinsville, IL 62234
 PHONE: 618-343-2300 FAX: 618-345-1281

Drawing Description	1968 Aerial Photograph
Project No.:	33826
Date:	August 2015
Drawn By:	DWC/RMN
Figure Number	B-4

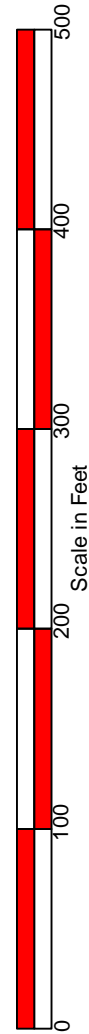
TETRA TECH



DRAWING: \\divs178f1.tt.local\Projects\Subway\Collinsville\Petition for adjusted standards\2015\New or revised exhibits\FIGURE B5 .DWG



Legend

- Boundary of Waste
- City of Collinsville Property Boundary
- Extent Area 1 Coal/Gob Storage
- Creeks/Tributary



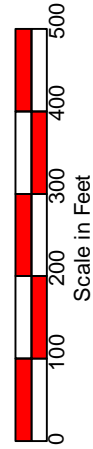
 TETRA TECH <small>www.tetrattech.com</small> 1634 Eastport Plaza Drive Collinsville, IL 62234 PHONE: 618-343-2300 FAX: 618-345-1281	Drawing Description 1968 Aerial Photograph	Project No.: 33826
	Collinsville Landfill Madison County, Illinois	Date: July 2015
		Drawn By: DWC/RMN
		Figure Number <h1 style="margin: 0;">B-5</h1>

DRAWING: \\divs178f1.tt.local\Projects\Subway\Collinsville\Petition for adjusted standards\2015\New or revised exhibits\FIGURE B6 .DWG



Legend

- Boundary of Waste
- City of Collinsville Property Boundary
- Extent Area 1 Coal/Gob Storage
- Extent Area 3 Pond
- Creeks/Tributary
- Former Area 2



TETRA TECH

www.tetrattech.com

1634 Eastport Plaza Drive
Collinsville, IL 62234
PHONE: 618-343-2300 FAX: 618-345-1281

Drawing Description	33826
1974 Aerial Photograph	Date: July 2015
Collinsville Landfill Madison County, Illinois	Drawn By: DWC/RMN
Figure Number B-6	

Project No.:	33826
Date:	July 2015
Drawn By:	DWC/RMN
Figure Number B-6	

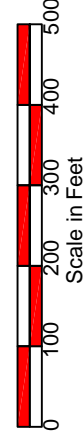


DRAWING: \\divs178fs1.tt.local\Projects\Subway\Collinsville\Petition for adjusted standards\2015\New or revised exhibits\FIGURE B7 .DWG



Legend

- Boundary of Waste
- City of Collinsville Property Boundary
- Extent Area 1 Coal/Gob Storage
- Extent Area 3 Pond
- Creeks/Tributary
- Former Area 2



TETRA TECH www.tetrattech.com 1634 Eastport Plaza Drive Collinsville, IL 62234 PHONE: 618-343-2300 FAX: 618-345-1281	Drawing Description 1978 Aerial Photograph	Project No.: 33826 Date: July 2015 Drawn By: DWC/RMN
	Collinsville Landfill Madison County, Illinois	Figure Number <h1 style="margin: 0;">B-7</h1>

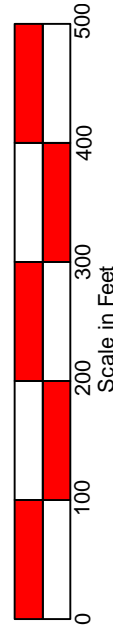


DRAWING: \\divs178f1.tt.local\Projects\Subway\Collinsville\Petition for adjusted standards\2015\New or revised exhibits\FIGURE B8 .DWG



Legend

- Boundary of Waste
- City of Collinsville Property Boundary
- Extent Area 1 Coal/Gob Storage
- Extent Area 3 Pond
- Creeks/Tributary
- Former Area 2



TETRA TECH

www.tetrattech.com

1634 Eastport Plaza Drive
Collinsville, IL 62234
PHONE: 618-343-2300 FAX: 618-345-1281

Drawing Description	1986 Aerial Photograph
Collinsville Landfill Madison County, Illinois	

Project No.:	33826	Date:	July 2015
Drawn By:	DWC/RMN	Figure Number	
		B-8	

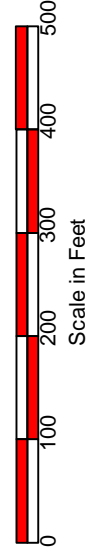


DRAWING: \\divs178f1.t.local\Projects\Subway\Collinsville\Petition for adjusted standards\2015\New or revised exhibits\FIGURE B9 .DWG



Legend

- Boundary of Waste
- City of Collinsville Property Boundary
- Extent Area 1 Coal/Gob Storage
- Extent Area 3 Pond
- Creeks/Tributary
- Former Area 2



TETRA TECH

www.tetrattech.com

1634 Eastport Plaza Drive
Collinsville, IL 62234

PHONE: 618-343-2300 FAX: 618-345-1281

Drawing Description	1988 Aerial Photograph
Project No.:	33826
Date:	July 2015
Drawn By:	DWC/RMN
Figure Number	B-9

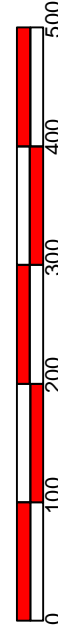


DRAWING: \\divs178f1.tt.local\Projects\Subway\Collinsville\Petition for adjusted standards\2015\New or revised exhibits\FIGURE B10 .DWG



Legend

- Boundary of Waste
- City of Collinsville Property Boundary
- Extent Area 1 Coal/Gob Storage
- Extent Area 3 Pond
- Creeks/Tributary
- Former Area 2



Scale in Feet



TETRA TECH

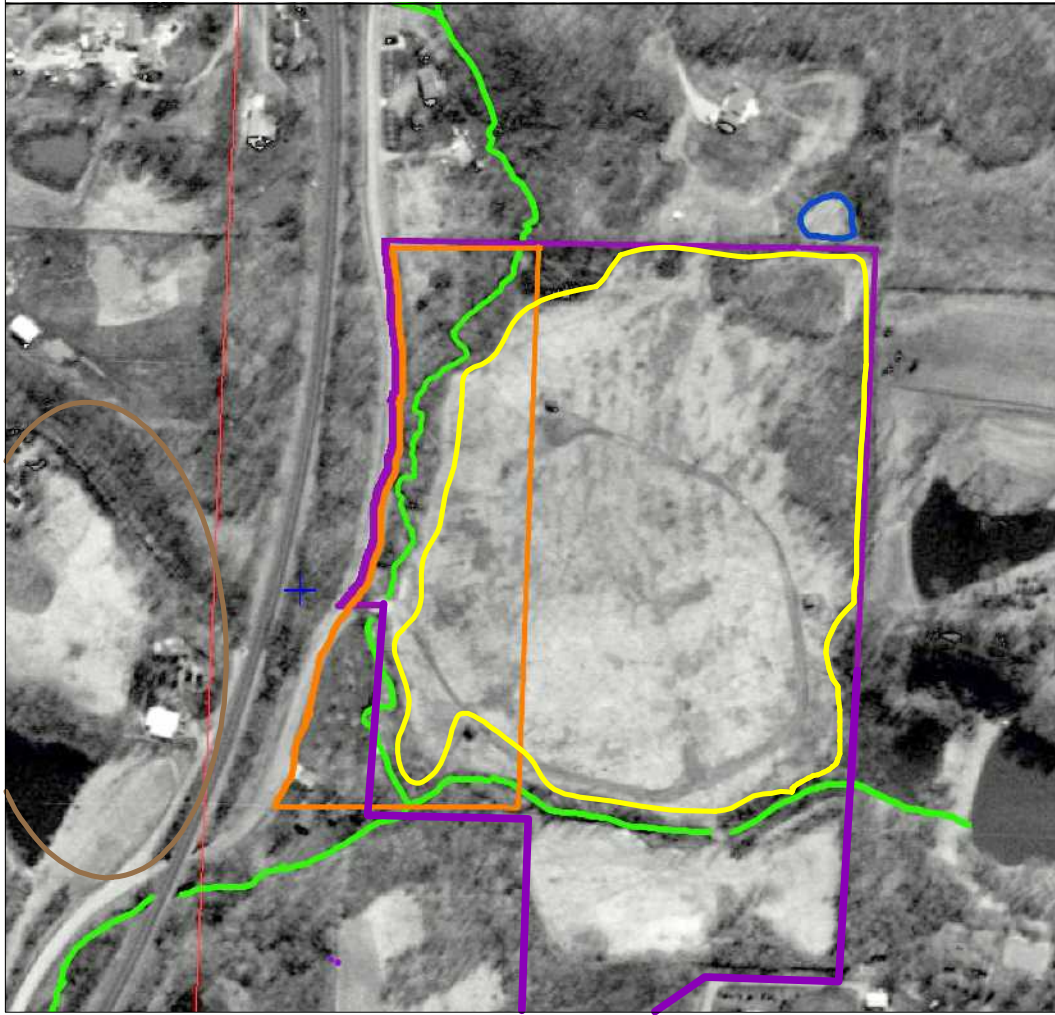
www.tetrattech.com

1634 Eastport Plaza Drive
Collinsville, IL 62234
PHONE: 618-343-2300 FAX: 618-345-1281







Drawing Description	Project No.: 33826
1993 Aerial Photograph	Date: July 2015
Collinsville Landfill Madison County, Illinois	Drawn By: DWC/RMN
	Figure Number B-10

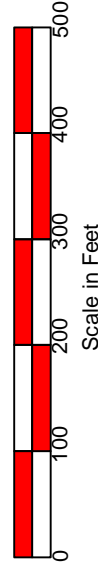


DRAWING: \\divs178f1.tt.local\Projects\Subway\Collinsville\Petition for adjusted standards\2015\New or revised exhibits\FIGURE B11 .DWG



Legend

-  Boundary of Waste
-  City of Collinsville Property Boundary
-  Extent Area 1 Coal/Gob Storage
-  Extent Area 3 Pond
-  Creeks/Tributary
-  Former Area 2






TETRA TECH

www.tetrattech.com

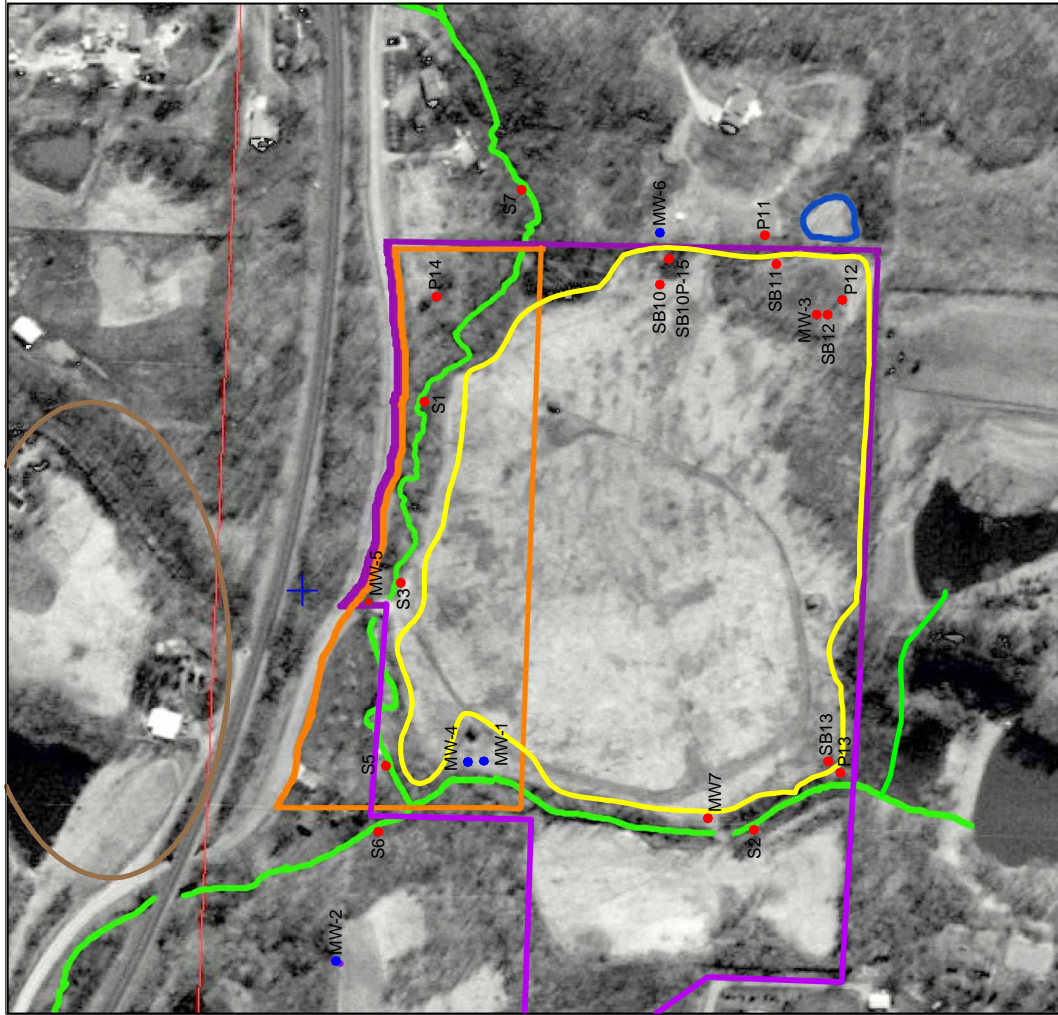
1634 Eastport Plaza Drive
Collinsville, IL 62234
PHONE: 618-343-2300 FAX: 618-345-1281

Drawing Description	33826
1998 Aerial Photograph	Date: July 2015
Collinsville Landfill Madison County, Illinois	Drawn By: DWC/RMN
Figure Number	
B-11	



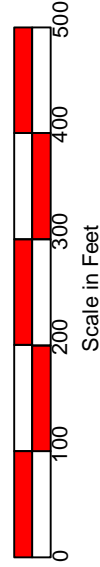
NORTH

DRAWING: P:\Subway\Collinsville\Petition for adjusted standards\2015\New or revised exhibits\FIGURE B12 .DWG



Legend

- Boundary of Waste
- City of Collinsville Property Boundary
- Extent Area 1 Coal/Gob Storage
- Extent Area 3 Pond
- Creeks/Tributary
- Former Area 2
- Additional 2006-2008 Assessment Monitoring Sample Locations
- Current Sample Locations
- S - Surface Sample
- P - Piezometer
- MW - Monitoring Well
- SB - Soil Boring



TETRA TECH

www.tetratech.com

1634 Eastport Plaza Drive
Collinsville, IL 62234

PHONE: 618-343-2300 FAX: 618-345-1281

Drawing Description	33826
1998 Aerial Photograph Sample Locations	Date: August 2015
Collinsville Landfill Collinsville, Illinois	Drawn By: DWC/RMN
Figure Number	
B-12	

NORTH